



ANNUAL
REPORT

2017-18

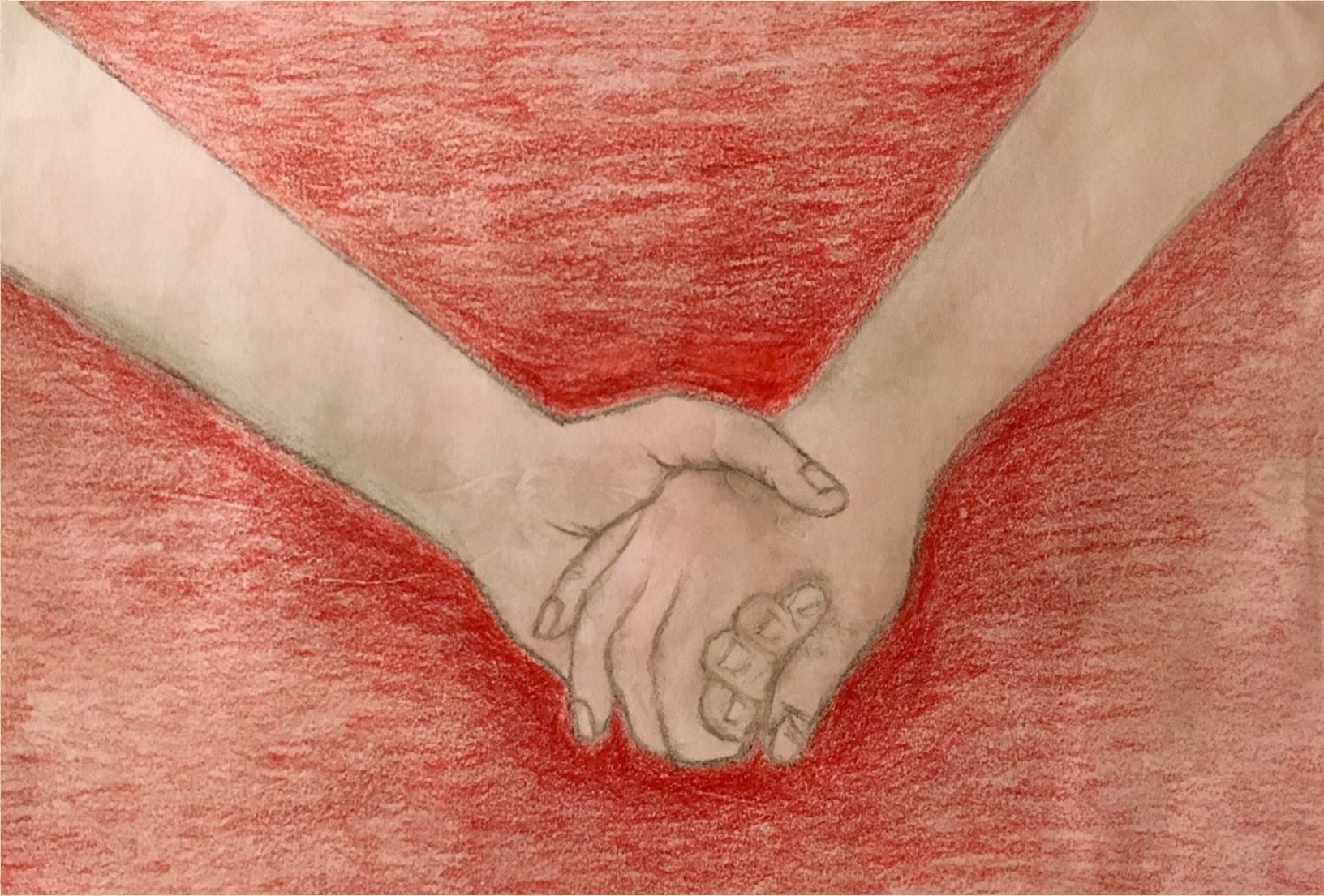


TABLE OF CONTENTS

4

ABOUT MATRI
MAITRI'S PHILOSOPHY

5 - 8

LANGUAGES WE SPEAK
MAITRI PROGRAMS

HELPLINE
LEGAL ADVOCACY
ECONOMIC EMPOWERMENT PROGRAM
TRANSITIONAL HOUSING
MENTAL HEALTH
COMMUNITY OUTREACH
VOLUNTEER ENGAGEMENT
BOUTIQUE

SURVIVORS SPEAK

9

THE PEOPLE

BOARD OF TRUSTEES
BOARD OF GOVERNANCE
STAFF
PARTNERS & DONORS

10

MAITRI GRANTS
AWARDS & RECOGNITION

11

FINANCIALS
TAX STATUS

ABOUT MAITRI

MAITRI is a free, confidential nonprofit organization serving the South Asian community in Santa Clara and surrounding counties with a two-fold goal: lead families in our community to a violence-free and safe future, and on a broader scale, enact social change. Since our inception in 1991, we have impacted thousands of survivors through our programs: Helpline; Legal Advocacy; Anjali Transitional Housing, the only one of its kind in the Bay Area; Economic Empowerment Program; Community Outreach and Maitri Boutique. Maitri's programs fill an important gap in the community for services that are culturally and linguistically tailored to mitigate barriers faced by South Asians experiencing domestic violence, human trafficking, family conflict, and cultural isolation. We believe that the best relationships are characterized by mutual respect, open communication and individual empowerment. To that end; all our activities are designed to help South Asian survivors make an informed choice.



MAITRI'S PHILOSOPHY

- ▶ **HELP INTEGRATE CLIENTS INTO MAINSTREAM SOCIETY**
- ▶ **FOCUS EFFORTS ON SUPPLEMENTING AND COMPLEMENTING EXISTING SERVICES**
- ▶ **FOSTER SELF-RELIANCE AND SELF-CONFIDENCE IN OUR CLIENTS**

LANGUAGES WE SPEAK

| | | |
|----------------|-----------|---------|
| Bengali | Gujarati | Hindi |
| Kannada | Malayalam | Marathi |
| Punjabi | Marwari | Tamil |
| Telugu | Urdu | Sindhi |
| English & more | | |



MAITRI PROGRAMS

Year after year, Maitri serves the South Asian community empowering survivors of domestic violence to lead their lives with dignity and independence. Through its various programs and services, Maitri continues to widen its reach to the community and extend its impact on the community through prevention, education, and advocacy to bring about a social transformation. Powered by the relentless work of the volunteers, the staff, and the board, Maitri works to create a society free of violence, a society where there is equity and dignity for all.

Maitri receives grants and funding from the government, corporations and foundations, and the community. We are deeply thankful to all the funding we receive and we cannot do the work we do without the support from the community.

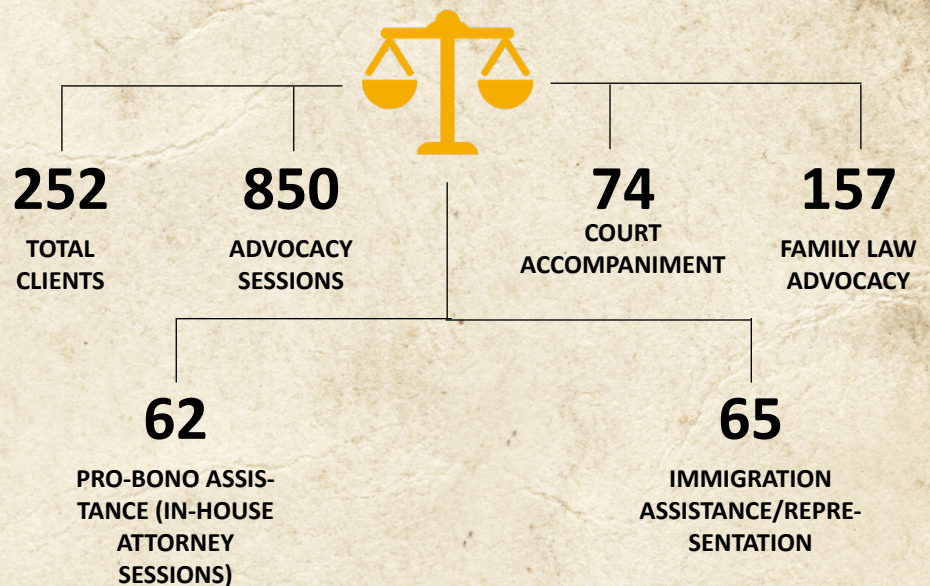
HELPLINE

Maitri Helpline is at the heart of our agency and the first point of contact for clients. Our Helpline provides free, confidential and culturally responsive crisis intervention, danger assessment, safety planning, peer counseling, immediate assistance with basic needs and referrals among other essential services.



LEGAL ADVOCACY

Maitri's Legal program provides free, confidential and holistic services to survivors that includes restraining order preparation, court accompaniments, family law advocacy and information helping to navigate the legal systems. Maitri is Department of Justice Accredited to provide immigration assistance and representation to qualified individuals. Through policy advocacy, Maitri's Legal program engages in bringing about structural and procedural changes within the systems to serve the needs of survivors better.



ECONOMIC EMPOWERMENT

Economic Empowerment Program (EEP) helps our clients identify their financial and career goals, find and pursue the right opportunities, and gain financial independence. We believe that without financial security, it is almost impossible to be empowered to leave an abusive situation.



TRANSITIONAL HOUSING

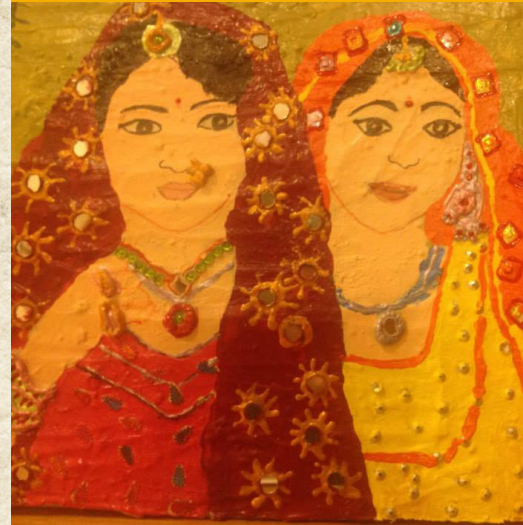
The Anjali Transitional House provides a safe and sheltered environment for women to transition into an empowered, self-sufficient and independent life. Case management, counseling, and referrals to legal, skill building, and other resources are part of the services provided.

TOTAL SURVIVORS HOUSED

34

20
adults

14
children



MENTAL HEALTH

Maitri's Mental Health program provides culturally responsive mental health counseling services for its clients.



Counseling services provided in Hindi, Urdu and English for individuals and families with children



Workshops conducted:
– Assertiveness focused on professional and personal life
– New Beginnings for Single Women

COMMUNITY OUTREACH

Maitri's Outreach program is the bridge between the community and the organization. The primary aims for this program is to increase the visibility of Maitri in the community, raising awareness against domestic violence and engage community in prevention.

27
OUTREACH
BOOTHS

19
PRESENTATIONS

13
GIVING
TREES

9
MEDIA
COVERAGE

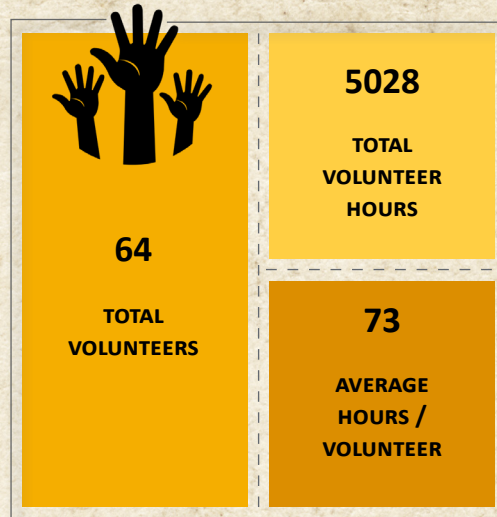
19
MASS
EMAILS

5233
CONTACTS

3788
FACEBOOK
LIKES

VOLUNTEER ENGAGEMENT

Maitri volunteers form the backbone of our agency. Our volunteer client advocates put in a remarkable amount of time, effort, and dedication to support their clients.



BOUTIQUE

Maitri Boutique, operating since September 2014, is a platform for raising awareness about domestic violence and to generate funds to run the Economic Empowerment Program. The Boutique offers donated new and gently worn South Asian party wear for purchase at competitive prices.



SURVIVORS SPEAK



I feel very confident, I am standing on my feet. I am making my own decision. I seek out for help when I need. My life is better than earlier and I am very happy today. I see a lot of changes in myself.

Whatever I have achieved so far, huge credit goes to Maitri. I received perfect legal guidance. They provided me used clothing, and household stuff and these items were valuable for me when I left my house empty-handed. It is amazing how selflessly Maitri team works.

Maitri has been like a mother to me & my child helping me with all my problems and issues; had it not been for Maitri, I don't know what my fate would have been.

THE PEOPLE

BOARD OF TRUSTEES

| | |
|-------------------------|---------------|
| POONAM GOEL / CO CHAIR | NOREEN RAZA |
| SHAMIK MEHTA / CO CHAIR | RENI NARAYEN |
| VINITA GUPTA / CO CHAIR | RESHMA DORDI |
| AARTI AWASTHI | S. SURESH |
| MADHU KHANNA | VINITA BELANI |



BOARD OF GOVERNANCE

| | | |
|-----------------------------------|-----------------------------------|-------------------|
| SONYA PELIA PRESIDENT | GEETHA KRISHNAMURTHY TREASURER | MEGHNA HINDIA |
| ROMA MAJUMDAR VICE PRESIDENT | ARUNABEN SHETH | MUKTA SHARANGPANI |
| ABHA SINGHVI GENERAL SECRETARY | LAKSHMI KARAN | SWATI SAXENA |

STAFF

| | | |
|--|--|---|
| RAMA DHARMAJAN EXECUTIVE DIRECTOR | NANDINI RAY MANAGER, OUTREACH & PREVENTION | VINODHINI KRISHNAN DEVELOPMENT ASSOCIATE |
| JAYASRI SURESH MANAGER, TRANSITIONAL HOUSING & EEP | SHABANA ANSARI LEGAL ADVOCATE | VISHALAKSHI VALLURNATT MANAGER, DVLPM T & VOLUNTEER ENGAGEMENT |
| MANISHA GUPTA MANAGER, BOUTIQUE | SHAILAJA MAHAVADI HELPLINE ADVOCATE | TSERING DHONDUP ACCOUNTANT |
| MARIAM ALI MARRIAGE AND FAMILY THERAPY INTERN COUNSELOR | SNEHA AMBEKAR TRANSITIONAL HOUSING ADVOCATE | ZAKIA AFRIN MANAGER, CLIENT ADVOCACY PROGRAMS |

PARTNERS & DONORS

Maitri receives enormous support from partners and sponsors throughout the year. Every gift, regardless of type, size, and value is greatly appreciated. It is impossible to list all the support we receive, but be assured that your financial gifts and donations of time and in-kind support do not go unrecognized.

On behalf of our clients and their families, a heartfelt thank you!

MAITRI GRANTS

| | | |
|--------------------------------|---|---|
| GOVERNMENT GRANTS | California Office of Emergency Services | County of Santa Clara |
| | City of Cupertino General Funds | Social Services Agency, County of Santa Clara |
| | City of Mountain View | |
| FOUNDATIONS & CORPORATE GRANTS | Adobe Foundation | Smart & Final Charitable Foundation |
| | Amazon Smile | South Asian Bar Association |
| | Blue Shield of California Foundation | Sunlight Giving |
| | El Camino Healthcare District | The Safeway Foundation |
| | Hurlbut-Johnson Fund | The Sobrato Family Foundation |
| | Palo Alto Foundation Medical Group | van Löben Sels/RembeRock Foundation |
| | Community Healthcare Fund | Walmart Giving |
| | PayPal Gives | YWCA of the Mid-Peninsula Donor Advised |
| | Pinpoint Foundation | Fund of the Women's Foundation of California |
| | Silicon Valley Community Foundation | Wells Fargo Foundation |

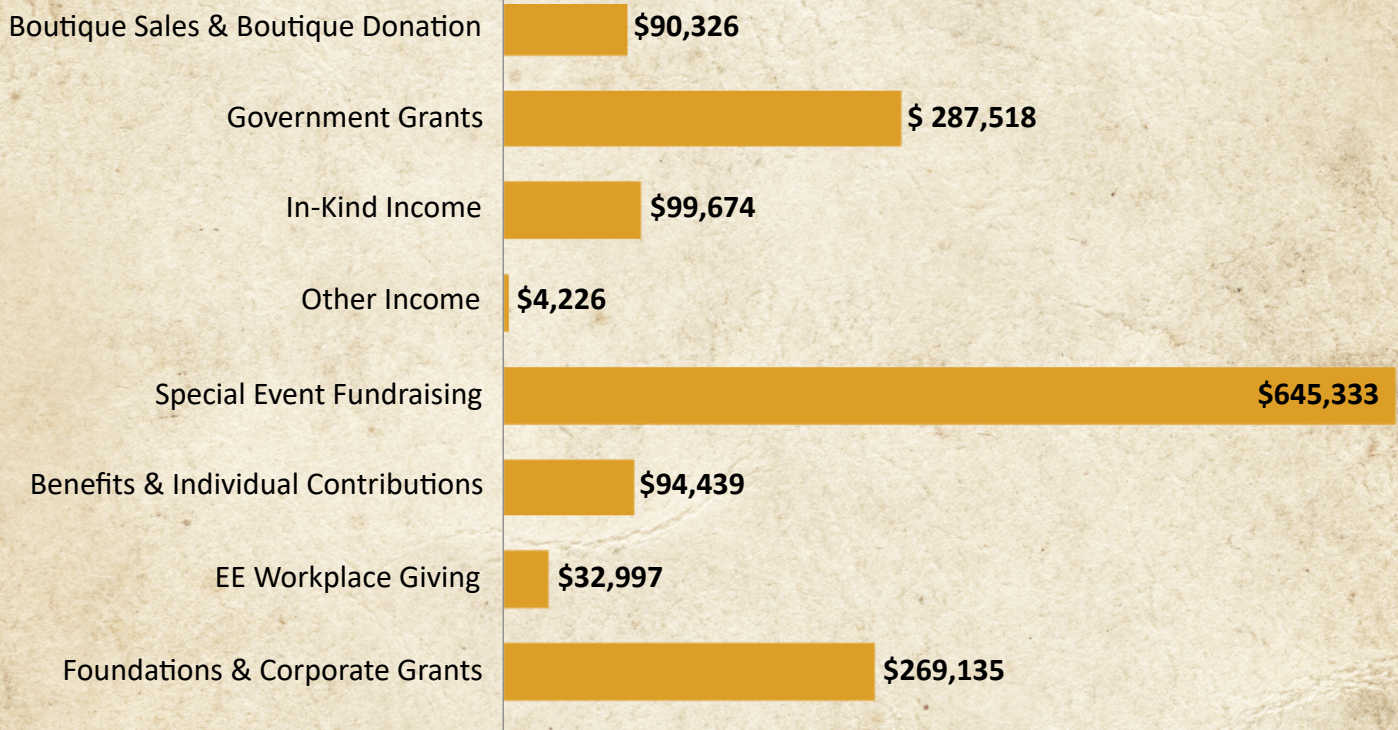
AWARDS & RECOGNITION

- ✓ **API Heritage Leadership 2018 Award**
from Senator Bob Wieckowski
- ✓ **Community Hero Award 2018**
from State Assembly member Kansen Chu
- ✓ **Certificate of Recognition**
from Cindy Chavez, Santa Clara County Supervisor
- ✓ **Certificate of Recognition**
from Assemblymember Ash Kalra (D-San Jose)
- ✓ **Certificate of Recognition**
from Cupertino City Council Member, Savita Vaidhyanathan

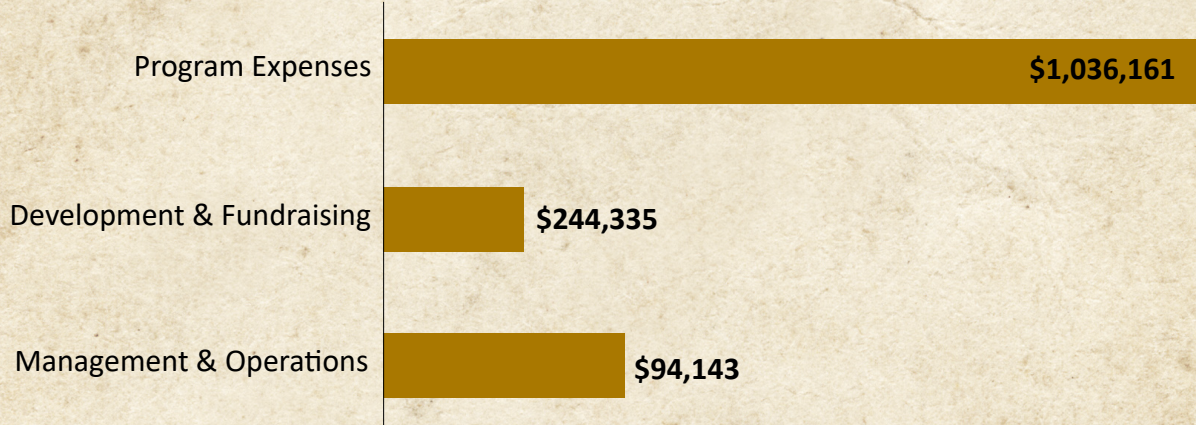


FINANCIALS

INCOME: \$1,523,648



EXPENSES: \$1,374,639



TAX STATUS

Maitri is tax-exempt under section 501(c)(3) of the Internal Revenue Code.

It is eligible to receive contributions deductible as charitable donations for federal income tax purposes.



Maitri

1 (408) 436-8393

www.maitri.org

Like us on Facebook
facebook.com/maitribayarea

Maitri Toll Free Helpline

1-888-862-4874

Maitri is a nonprofit organization based in the San Francisco Bay Area. Maitri is a federally tax-exempt organization as described in IRS Code Section 501(c)3 (tax exempt ID 94-3132087).

© 2018; Maitri

All artwork used in this report are from Maitri Art Fests

The image on the cover page was created by Maitri clients and volunteers

Report designed by Shilpa Sachdev